

HOTMARKER

HOTMARKER *SP2000*

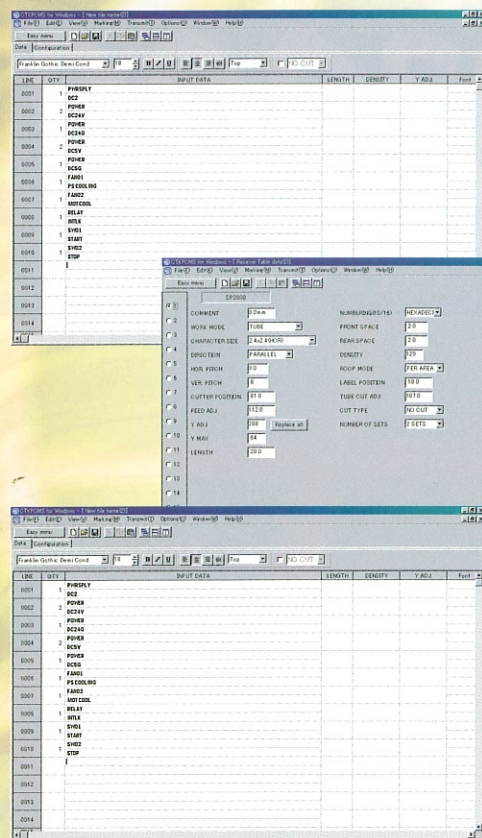
AUTOMATIC MARKING MACHINE FOR
TUBE, MARKER LABEL & TERMINAL ID BOARD



CE

CTK CORPORATION

SP2000 Thermal head type Printer for Tubes, Marker Labels & Terminal ID boards

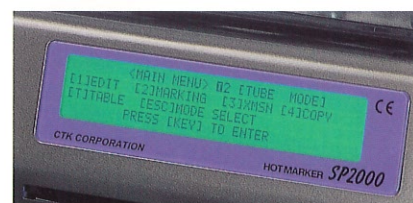
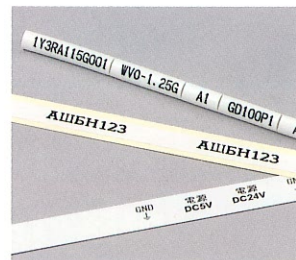


PC-link function

Dedicated software "CTKPCMS FOR Windows" and USB cable are supplied as standard accessories. Your PC can be used effectively for data input and management.

Various font style

In addition to internal fonts of SP2000, Windows TrueType fonts installed on your PC can be used to print letters of your local language, electrical symbols, etc. on your materials.



Operable on stand-alone mode

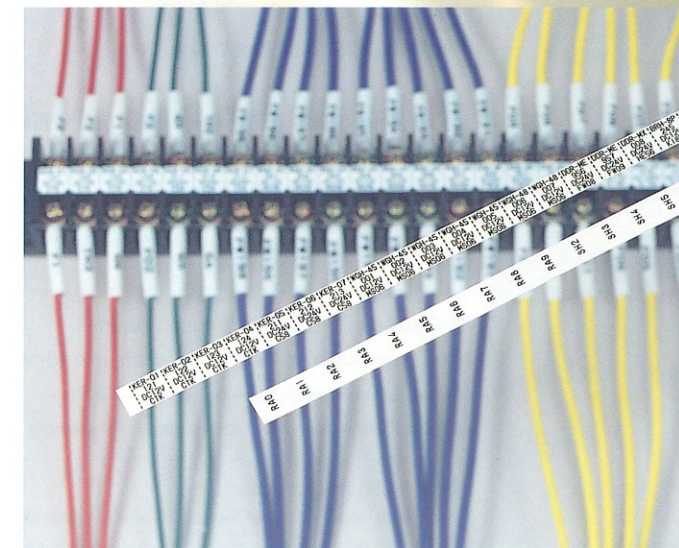
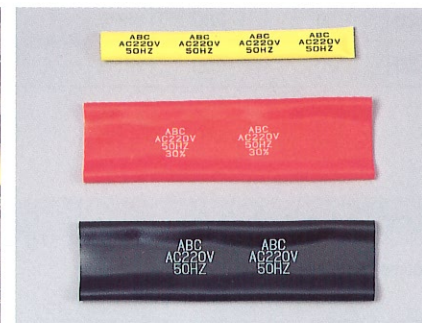
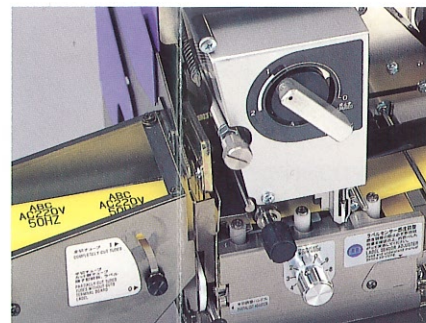
While unlinked with PC, SP2000 is also operable on a stand-alone mode with the LCD display and the optional keyboard.

Operation switches

Operation switches are available on the front panel. These switches are useful for feeding / ejecting marked material, etc. while SP2000 is operated with PC.

Printing on large-diameter tubes

Maximum applicable tube size:
O.D. 28.0mm (1 1/16 inch) / flattened with 45mm (1 3/4 inch)

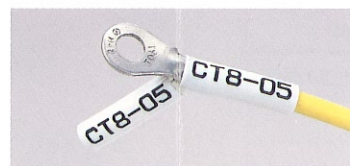


Improved mechanism

New mechanism enables to improve printing quality on hardened tubes in low temperature environment.

Tube cutting function

In addition to conventional methods of cutting tubes, "Set Mode" is adopted to process tubes alternately with the complete cutting mode and partial cutting mode.



Error detection system

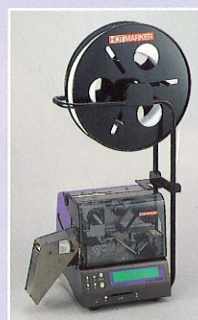
Sensors detect various types of errors to suspend automatic operation.



*Monitor and keyboard are not included.

OPTIONAL PARTS

● Tube Holder



TH400
Space-saving design tube holder



C-3
Floor-type tube holder

Tube reel set

Extra tube reel for TH400/C-3 to use different sizes of tubes

● English keyboard

For stand-alone operation



● Carrying case



● Data Card

● Font Card

Allows for storage of main unit and accessories

Dimensions :
410W x 370D x 560Hmm
Weight :
7kgs (approx.)

SP2000 MAIN SPECIFICATIONS

Main Unit

MARKING SYSTEM	Thermal head type
KIND OF CHARACTERS	96 characters: 0-9, A-Z, a-z, signs, etc.
CHARACTER SIZE AND ORIENTATION	2.4 x 1.2mm (HOR/VER) 1.8 x 0.9mm (HOR/VER) 3.0 x 2.4mm (HOR/VER) 2.0 x 1.2mm (HOR/VER) 5.0 x 3.0mm (HOR) 2.7 x 2.1mm (HOR)
FONT STYLE	CTK original fonts
APPLICATIONS	PVC tubes of O.D. 2.0mm through 28.0mm Heat shrink tubes of flatly folded width upto 45mm Marker Labels (precut type/long type without cuttings) Marker Plates (Terminal ID boards, except fiber boards)
PRODUCTION CAPACITY	About 4,500 pcs. per hour (under TUBE mode, 5 digits x 1 line marking on 20mm-long tube)
DATA STORAGE	Max. 1,000 lines storable in the internal memory. (Additional Data Card available as an optional accessory.)
NUMBERING	4-digit decimal/hexadecimal automatic numbering in ascending/descending order.
DATA DISPLAY	Backlit LCD (40 digits x 4 lines)
INTERFACE	USB x 1, RS-232C Serial port x 1
POWER SUPPLY	110 - 240V AC, 50/60Hz
DIMENSIONS	435(W) x 290(H) x 290(D)mm
WEIGHT	15.0 kgs

Software (CTKPCMS for Windows)

Software Requirement (Operating System)	Microsoft Windows XP Home/Professional Microsoft Windows 2000 Professional
Hardware Requirement	PC equipped with Intel Pentium processor and USB/RS-232C Serial port.
RAM	Capacity recommended by your operating system
Hard Disk	Min. 10MB of free disk space (for installation)

Consumables

Marking Foils

Ref.	Width (mm)	Length (M)	Color	Applications
S611-20	20	200	black	PVC tubes, Marker Labels, Terminal ID boards
S625-20	20	200	white	
S619-20	20	200	black	Polyolefin Heat Shrink tubes
S629-20	20	100	white	

Marker Label

RoHS-compliant adhesive labels



Size of each label (mm)	PVC	PET ("est" brand)	
	WHITE	WHITE	SILVER
6 x 17	TW-17(R6)	PETW0617	PETS0617
6 x 20	TW-20(R6)	PETW0620	PETS0620
6 x 23	TW-23(R6)	PETW0623	PETS0623
6 x Long type	LW-100(R6)	PETW0699	PETS0699

Marker Plate (端子記録板)



High quality & smooth surface for best printing results.
Packed in dust-protective transparent jacket.

Ref.	Width (mm) x Length (M)
MP-80-25	8.0 x 25
MP-85-25	8.5 x 25
MP-95-25	9.5 x 25
MP-100-25	10.0 x 25

PVC tubes

HOTMARKER brand Genuine PVC tubes
Most suitable to obtain legible printings with Hotmarkers



PRECAUTIONS TO ENSURE SAFETY



Before using the machine, be sure to read the instruction manuals and understand the proper usage of the machine.

"Windows" is a trademark of Microsoft Corporation. "Pentium" is a trademark of Intel Corporation. Actual color of the products may look slightly different to the photographs in this leaflet. The information contained in this leaflet, specifications and external appearance of products are subject to change without notice.



Identimark

Identimark, Kimberley Road,
Clevedon, Bristol, BS21 6QJ

01275 875 959

www.identimark.co.uk

info@identimark.co.uk

HOTMARKER

MANUFACTURER
CTK CORPORATION
1-7-17, Kandaizumi-cho,
Chiyoda-ku, Tokyo 101-0024
Japan
Tel: (03)3861-5610
Fax: (03)3861-5880
http://www.hotmarker.co.jp